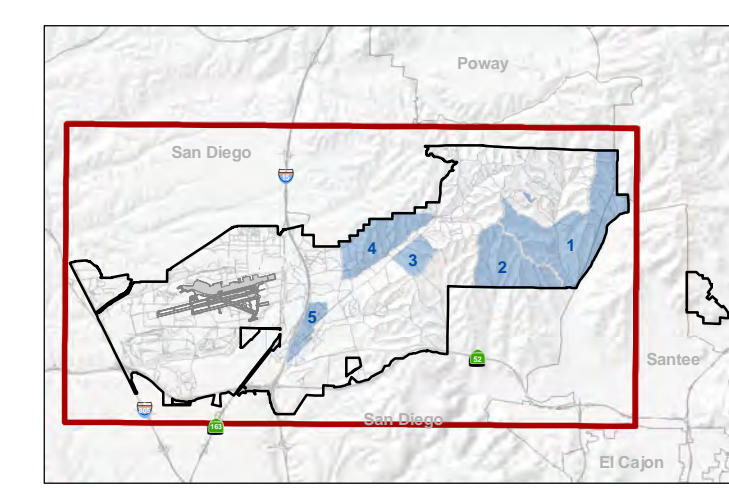
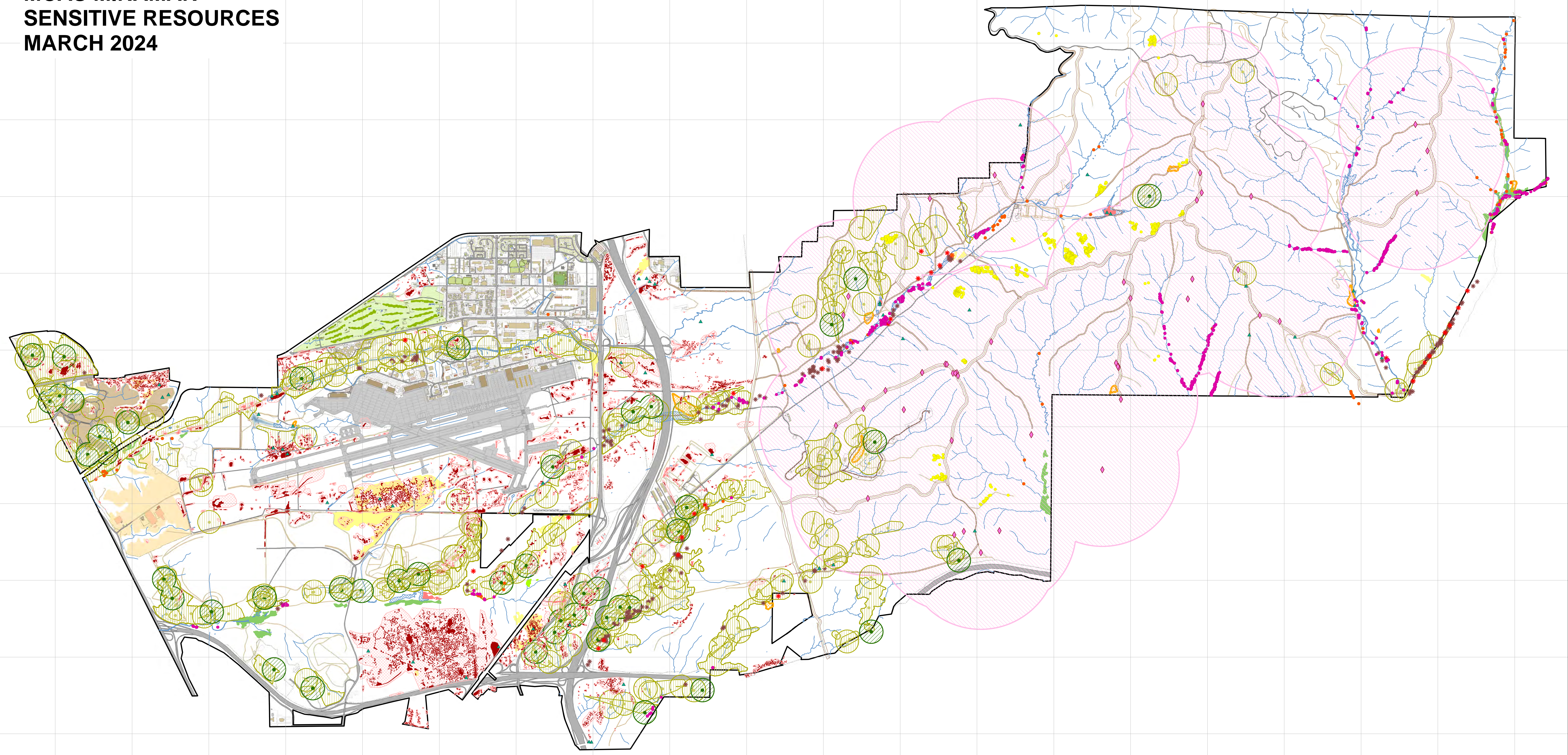


MCAS MIRAMAR SENSITIVE RESOURCES MARCH 2024

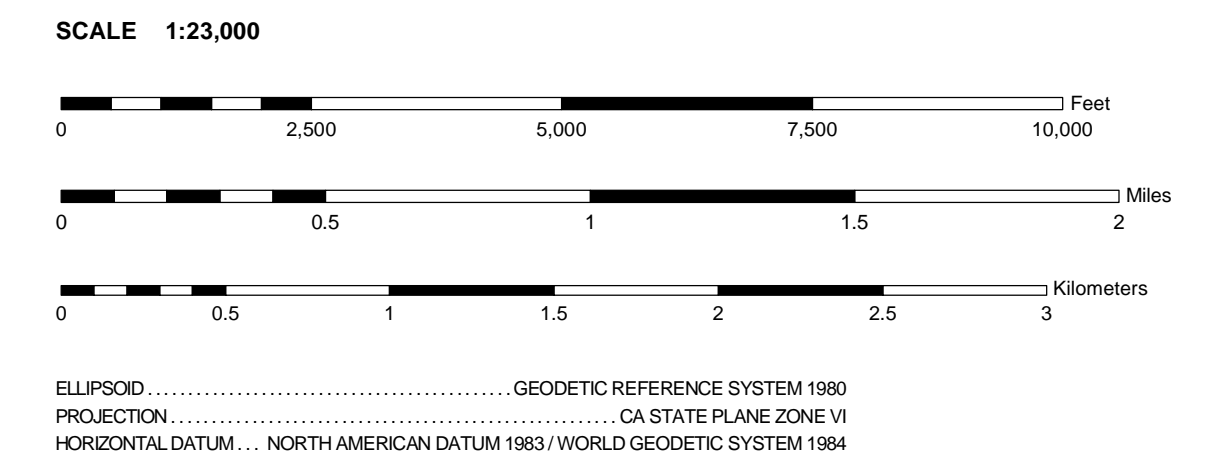


**MARINE CORPS
AIR STATION
MIRAMAR**

Marine Corps Air Station Miramar
Environmental Management Department
Natural Resources Division Director: David Boyer
Phone: 858.307.1125/1108

Map Publication Date: 12 March 2024

THE NORTH AMERICAN DATUM 1983 (NAD 83) AND THE
WORLD GEODETIC SYSTEM 1984 DATUM (WGS 84)
ARE EQUIVALENT FOR MAPPING, CHARTING AND
NAVIGATION AT THIS SCALE.
NAD 83 / WGS 84



NOTES

BOUNDARIES SHOULD NOT BE CONSIDERED AUTHORITATIVE. TELEPHONE AND ELECTRIC SERVICE LINES ARE NOT SHOWN IN DEVELOPED AREAS ONLY THROUGH-ROADS ARE CLASSIFIED ROAD CLASSIFICATIONS SHOULD BE REFERRED TO WITH CAUTION. THERE MAY BE PRIVATE ENCLAVES WITHIN THE BOUNDARIES OF THE NATIONAL OR STATE RESERVATIONS SHOWN ON THIS MAP.

ALTHOUGH EVERY EFFORT HAS BEEN MADE TO ENSURE THE ACCURACY OF THE INFORMATION, ERRORS AND CONDITIONS ORIGINATING FROM PHYSICAL SOURCES TO DEVELOP THE DATABASE MAY BE REFLECTED IN THE DATA SUPPLIES. THE USER MUST BE AWARE OF DATA CONDITIONS AND ULTIMATELY BEAR RESPONSIBILITY FOR THE APPROPRIATE USE OF THE INFORMATION WITH RESPECT TO POSSIBLE ERRORS. ORIGINAL MAP SCALE, COLLECTION METHODOLOGY, CURRENCY OF THE DATA AND OTHER CONDITIONS SPECIFIC TO CERTAIN DATA. THIS INFORMATION DOES NOT DEPICT ALL POSSIBLE RESOURCES. FIELD VERIFICATION OF ALL DATA IS REQUIRED FOR SITE-SPECIFIC PROJECTS. THIS INFORMATION IS DEEMED RELIABLE, BUT NOT GUARANTEED.

- SURVEYED ENDANGERED SPECIES**
- WILLOWY MONARDELLA (2017, 2019, 2023)
 - DEL MAR MANZANITA (2015)
 - CA GNATCATCHER SIGHTINGS (2022, 2023)
 - HISTORICAL CA GNATCATCHER SIGHTINGS (2007, 2009, 2013, 2016, 2019)
 - LEAST BELL'S VIREO TERRITORIES (2023)
 - HISTORICAL LEAST BELL'S VIREO TERRITORIES (2011, 2014, 2017, 2020)
 - QUINO CHECKERSPOT BUTTERFLY (2017-2019, 2023)
 - QUINO CHECKERSPOT BUTTERFLY 1km RADIUS HABITAT PATCH BUFFER
 - CA GNATCATCHER 500ft RADIUS USE AREAS (2022, 2023)
 - HISTORICAL CA GNATCATCHER USE AREAS (2007, 2009, 2013, 2016, 2019)

- AREAS SURVEYED FOR VERNAL POOL RESOURCES**
- VERNAL POOLS / PONDED SITES WITH ENDANGERED SPECIES
 - OTHER PONDED SITES SURVEYED (NO ENDANGERED SPECIES)
 - VERNAL POOL SURVEY WATERSHEDS
- OTHER SENSITIVE RESOURCES**
- MILKWEED (2023)
 - ▲ WESTERN SPADEFOOT TOAD (pre-2023)
 - ADDITIONAL SENSITIVE RESOURCES
 - POSSIBLE WATERS OF THE U.S.
 - NATIVE GRASSLAND
 - OAK WOODLAND
 - RARE OTAY CEANOETHUS